

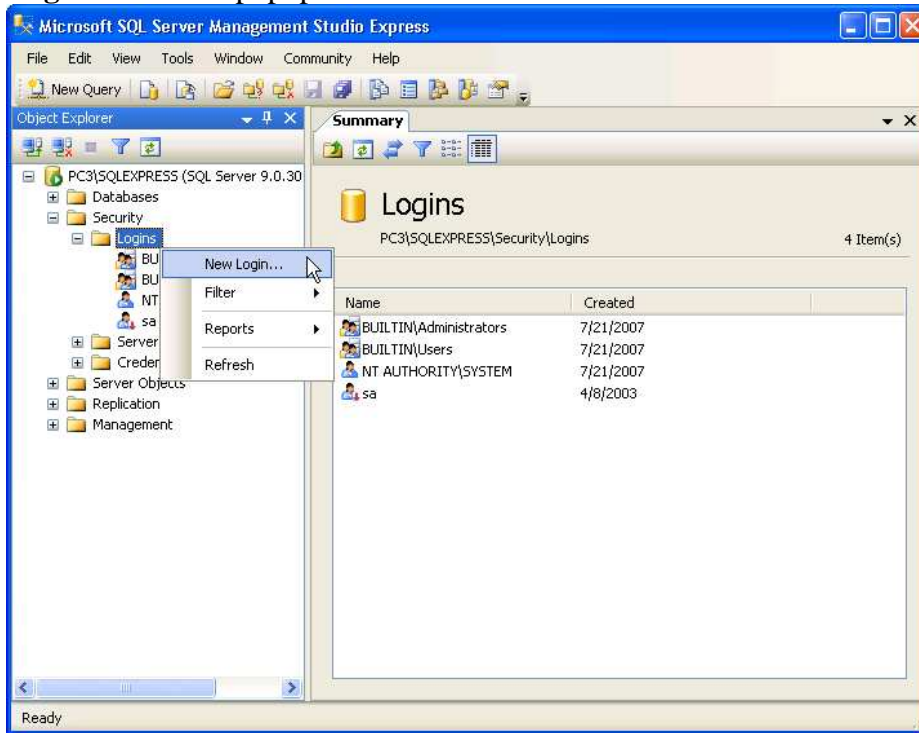
Microsoft SQL Server Database Setup Guide for A3-Platform

You can create MSSQL users and databases through **SQL Server Management Studio**.

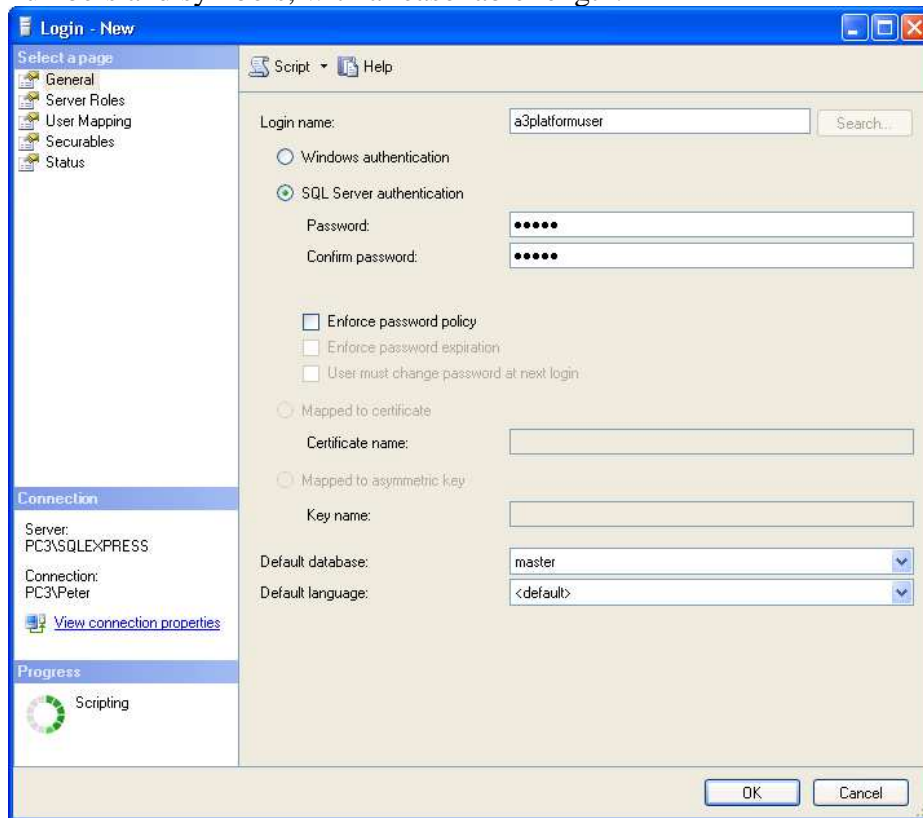
1. Start the SQL Server Management Studio.



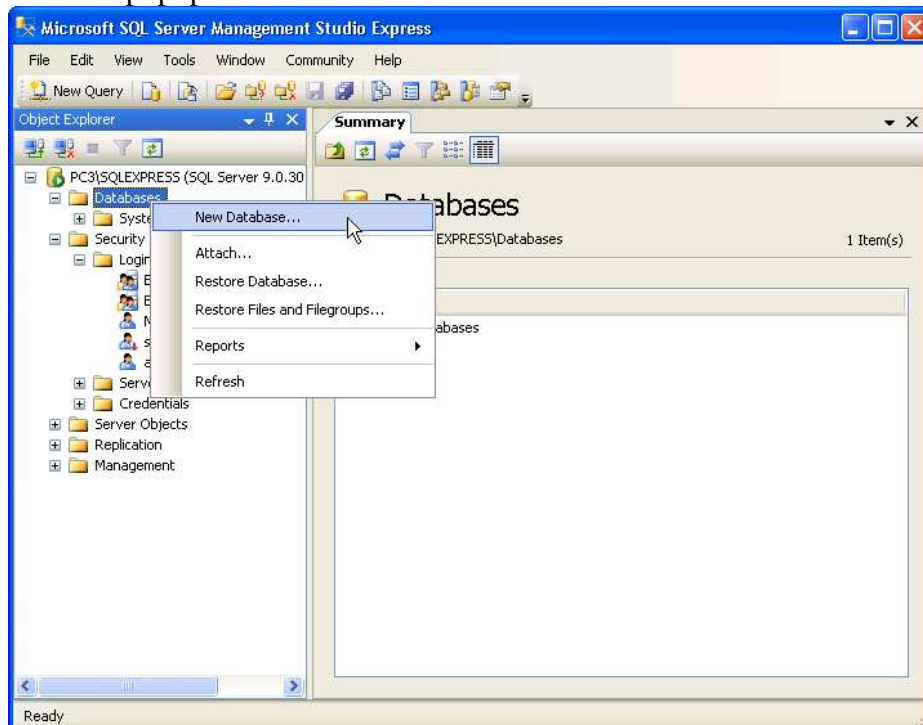
2. Create a user for managing the A3-Platform database first. In the **SQL Server Management Studio**, expand the tree node **Server > Security > Logins**. Right click **Logins** and select **New Login...** from the popup menu.



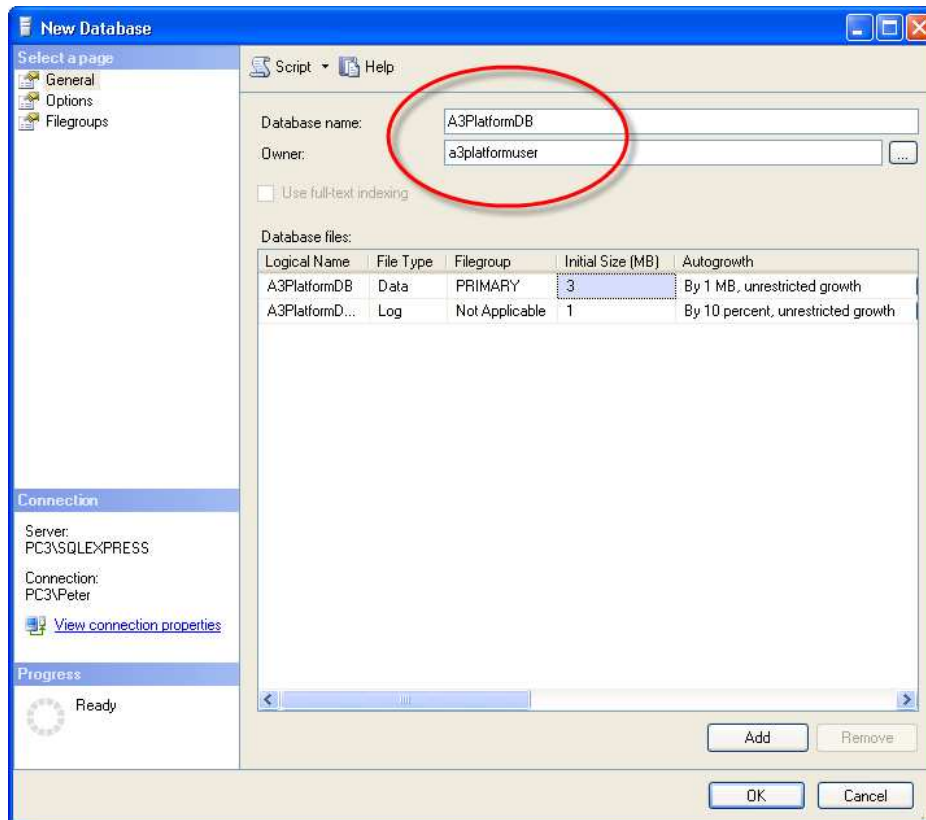
3. Enter the user name and password. *a3platformuser* is an example of user name. Password should be difficult for someone else to guess. It is recommended to be a combination of letters, numbers and symbols, with a reasonable length.



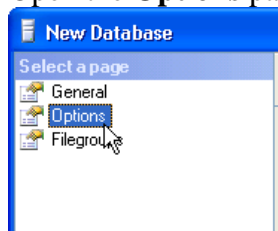
4. Click **OK** to confirm.
5. In the **SQL Server Management Studio**, right click **Databases** and select **New Database...** from the popup menu.



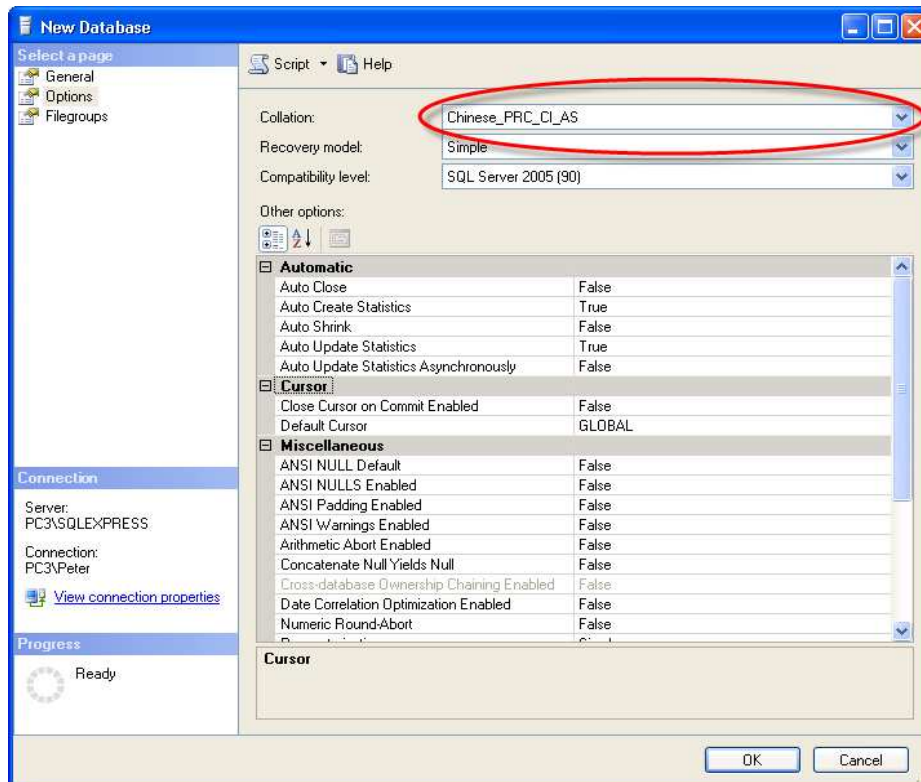
6. Create the database for A3-Platform. You can name it as *A3PlatformDB* or any qualified name. After that, select the owner of the database, which is the user created above.



7. Open the **Options** page.



8. Select a **Collation** that best fits your usage. An incorrect **Collation** selection might result in displaying garbled and weird characters in the web page.



9. Click **OK** to confirm.