

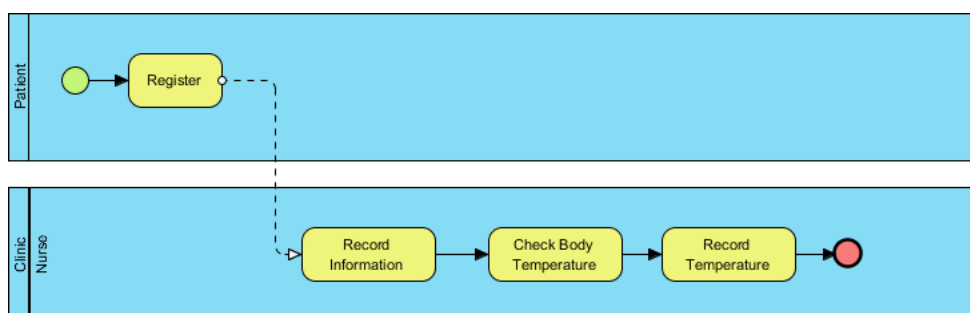


How to Use Secondary Pools for BPMN Task?

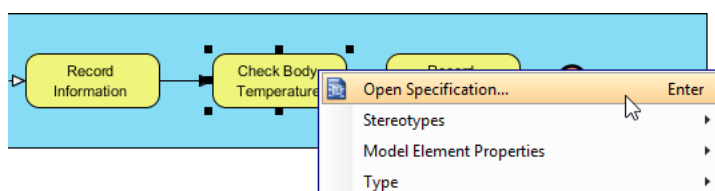
Written Date : August 16, 2010

Under normal circumstances, we assign merely one pool to a task in [BPD](#). However, in some cases, you may want a task being able to be done by more than one role, in this case, you can assign secondary pools to the task. In this tutorial, we will demonstrate how to assign secondary pools to a task in BPD with [Visual Paradigm](#).

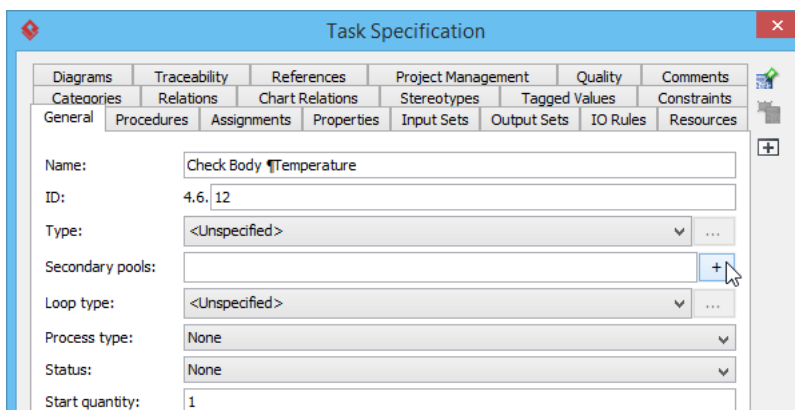
1. Download [Simple-Clinic.vpp](#). You can also find this file at the bottom of this tutorial.
2. Open the downloaded .vpp file in Visual Paradigm. To open a project, select **Project > Open** from the application toolbar.
3. Open the business process diagram *Patient Registration*.



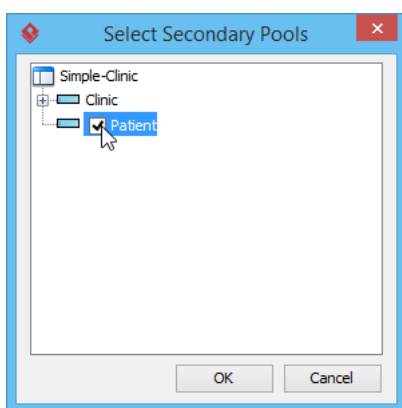
4. Assume you find *Check Body Temperature* task can be done by either the nurse or the patient. In this case, you can assign secondary pools to the task.
5. Right click on *Check Body Temperature* task and select **Open Specification...** from the pop-up menu to open **Task Specification** window.



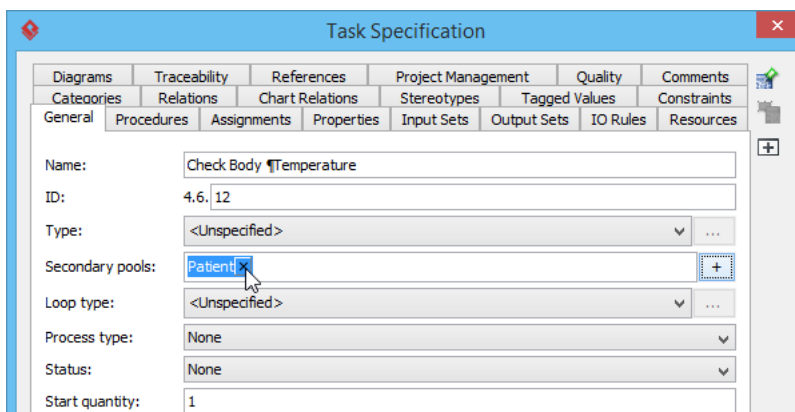
6. In the **Task Specification** window, open **General** tab. Click the plus button in **Secondary pools**.



7. The available pools are listed in the **Select Secondary Pools** window. Check **Patient** pool and then click **OK** button in the **Select Secondary Pools** window. Subsequently, click **OK** button in the **Task Specification** window.



8. Let's say later on you find that checking body temperature should be done by the nurse only, you can remove the *Patient* pool by clicking on the small cross button next to *Patient*.



Resources

1. [Simple-Clinic.vpp](#)

Related Links

- [Watch another example in YouTube.](#)



[Visual Paradigm home page](https://www.visual-paradigm.com/)
(<https://www.visual-paradigm.com/>)

[Visual Paradigm tutorials](https://www.visual-paradigm.com/tutorials/)
(<https://www.visual-paradigm.com/tutorials/>)